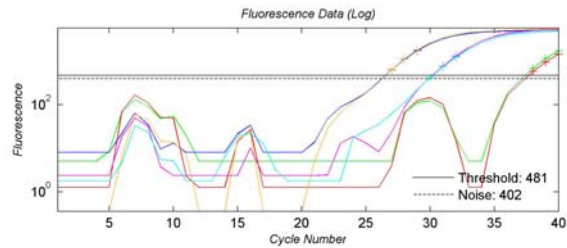
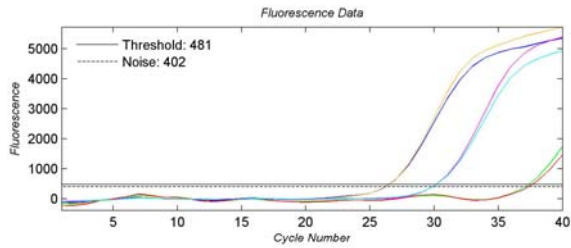


QuanTyper-48

100 µl PCR

Rotor-Gene 6000

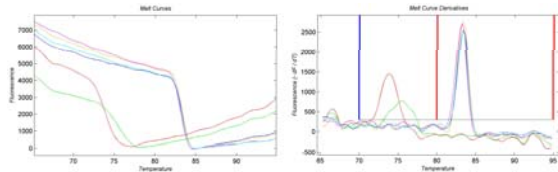
Temp profile
 95°C for 2'
 40 cycles of:
 96°C 0 sec
 62°C 6 sec
 74°C 3 sec



Raw Data File: 1671 QT 26-11-2008 at 1208.rpd Channel: Green530
 Report Created: 26-Nov-2008 12:57:28 Volume: 100µl Smoothing: 90 Number of Fit Points: 3 Slope Correction: On Conc Unit: Copies/Reaction

Position	Name	Type	Batch Type	Conc	Ct	Calc. Conc
1	Sample 1	NTC		-	37.2	1.45*
2	Sample 2	NTC		-	37.5	1.15*
3	Sample 3	Standard	Dilution sample 03/ Dilution 1	1000	26.4	1e+3
4	Sample 4	Standard	Replicate sample 03/ Dilution 1	1000	26.4	999
5	Sample 5	Standard	Dilution sample 05/ Dilution 1	100	30.2	101
6	Sample 6	Standard	Replicate sample 05/ Dilution 1	100	30.2	99.5

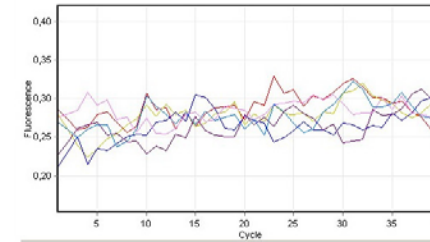
*Unreliable result, outside the range of the std curve.



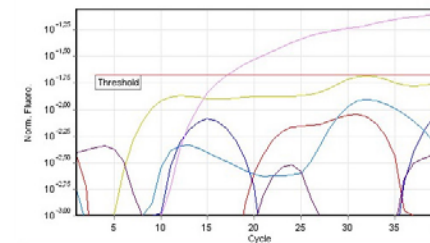
Report Created: 26-Nov-2008 12:56:51 Channel: Green530
 Volume: 100µl Smoothing: 90

Position	Name	Type	Batch Type	Tm (70-80°C)	Tm (80-95°C)
1	Sample 1	NTC		73.5	
2	Sample 2	NTC		73.5	
3	Sample 3	Standard	Dilution sample 03/ Dilution 1		83.4
4	Sample 4	Standard	Replicate sample 03/ Dilution 1		83.3
5	Sample 5	Standard	Dilution sample 05/ Dilution 1		83.2
6	Sample 6	Standard	Replicate sample 05/ Dilution 1		83.3

Raw Data For Cycling A.Green



Quantitation data for Cycling A.Green



QuanTyper-48 | Rotor-Gene 6000
 NTC NTC 10x dil 100x dil | NTC NTC 10x dil 100x dil

